

MIFARE & ISO14443A & ISO14443B & ISO15693 IC CARD READ/WRITE MODULE

# JMY601 IC Card Read/Write Module

---

## User's Manual

(Revision 4.01)

**Jinmuyu Electronics Co. LTD**

**2015/1/17**



Please read this manual carefully before using. If any problem, please mail to: [Jinmuyu@vip.sina.com](mailto:Jinmuyu@vip.sina.com)



# Contents

1	Product introduction .....	2
2	Key Characteristics .....	2
3	Technical parameters .....	2
4	Physical parameter and pin outs .....	3
4.1	Photo.....	3
4.2	Dimension .....	3
4.3	Pin configurations and pin outs .....	4
4.4	Module function configuration table .....	4
5	Operate the module .....	5



# 1 Product introduction

JMY601 is a series of RFID read/write module with UART or IIC communication port. JMY601 has various functions and supports multi ISO/IEC standard of contactless card. The RF protocol is complex, but the designer combined some frequent used command of RF card and then user could operate the cards with full function by sending simple command to the module.

The module and antenna is integrated. The impedance between RF circuit and antenna was tuned by impedance analyzer, and then the module has excellent performance and stability.

## 2 Key Characteristics

- **Modules integrated antenna, excellent consistency and stability**
- **Light and slim**
- **RF protocol in accordance with EMV2010**

## 3 Technical parameters

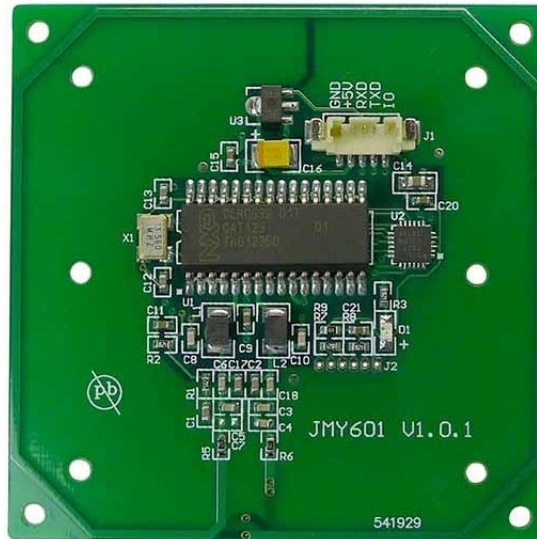
- PCD type: NXP MF RC531 / CL RC400 / SL RC632
- Working frequency: 13.56MHz
- Supported standard: ISO14443A, ISO14443B, ISO15693
- Card supported: see: [module function configuration table](#)
- Anti collision ability: Full function anti collision; be able to set multi-cards or single card
- Auto detecting card: Supported, default OFF, could be set
- Data FLASH: 512 Bytes
- Power supply: DC 5V ( $\pm 10\%$ )
- Interface: UART or IIC on order
- Communication speed: IIC Max. 200Kbps  
UART 19200bps / 9600bps / 38400bps / 57600bps / 115200bps
- Max. command length: JCP04 253 bytes  
JCP05 510 bytes
- Interface level: UART / IIC: 3.3V (TTL level; 5V tolerance, by pull up)
- Power consumption: 150mA
- Operating distance: 100mm (M1 typical distance, depending on card quality)
- Dimension: 60mm\*60mm\*5.7mm
- Weight: About 20g
- ISP: Supported
- RoHS: Compliant
- CE certification: in plan (Jan. 17, 2015)
- Operating temperature: -25 to +85°C



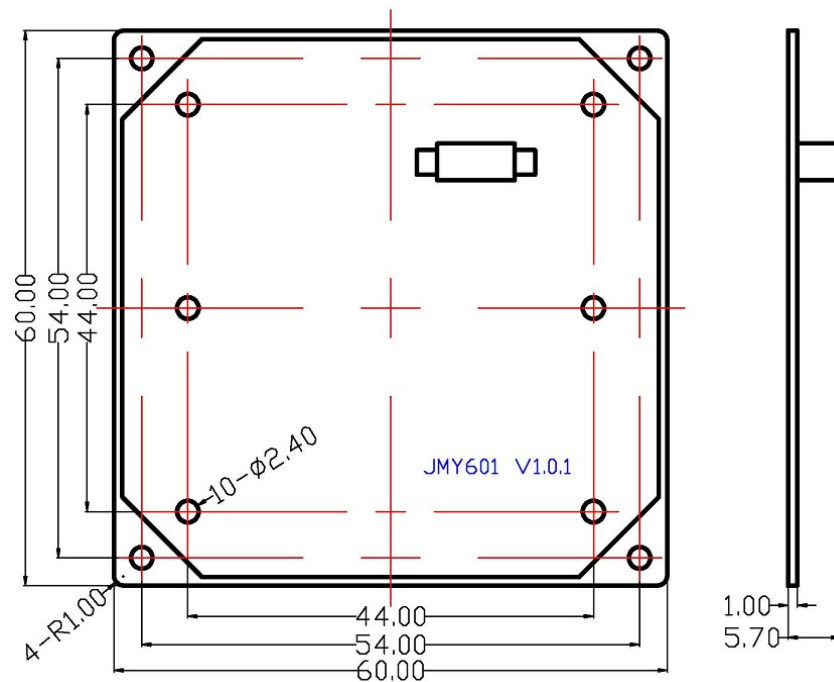
- Storage temperature: -40 to +125°C

## 4 Physical parameter and pin outs

### 4.1 Photo



### 4.2 Dimension





### 4.3 Pin configurations and pin outs

PIN	Function	Type	Description
1	IO	I/O	Card present indicator
2	TX / SDA	I/O	UART TXD / IIC SDA
3	RX / SCL	Input	UART RXD / IIC SCL
4	VCC	Power	VCC
5	GND	Power	GND

### 4.4 Module function configuration table

	JMY601C	JMY601G	JMY601H
PCD	MF RC531	SL RC400	CL RC632
JCP04 protocol	●	●	●
JCP05 protocol	●	●	●
MIFARE 1K	●		●
MIFARE 4K	●		●
MIFARE Ultra Light	●		●
MIFARE Ultra Light C	●		●
MIFARE Mini	●		●
MIFARE DES fire	●		●
MIFARE Plus	●		●
T=CL TYPE A	●		●
SR176	●		●
SRI512	●		●
SRI1K	●		●
SRI2K	●		●
SRI4K	●		●
SRIX4K	●		●
T=CL TYPE B	●		●
I.CODE 1		●	●
I.CODE SLI		●	●
I.CODE SLI-S		●	●
TI Tag-it series		●	●
ST LRI series		●	●
On Chip Data Flash	512 bytes		
IIC Interface	JMY601CI	JMY601GI	JMY601HI
UART Interface	JMY601CT	JMY601GT	JMY601HT



## 5 Operate the module

The physical interfaces of module are various. But the data link layer protocols are in accordance with JCP04 & JCP05. Please reference “JMY600 series general communication protocol manual.pdf”. For convenience to test the module, we supply PC software: TransPort to users. We have interface program source code to help users also. They are KELL projects in C51 or ASM51 format.

Please log on to our website: <http://www.jinmuyu.com> to download or mail to [jinmuyu@vip.sina.com](mailto:jinmuyu@vip.sina.com) to obtain the resources.